



# DTBJ30RT

This telescopic platform has a very low centre of gravity, resulting in excellent stability and outstanding lifting performance. It is equipped with a fuel-saving diesel engine and 4 steering drive wheels integrated into the axle for improved offroad performance.

The platform is equipped with a telescopic jib, and the boom folds for transport so that the vehicle can be shipped in a container.



## STANDARD EQUIPMENT

- Proportional controls
- Thumb rocker steering
- Flashing light
- Horn
- Hour counter
- Harsh Environment Kits
- 12V DC Auxiliary Power

## PERFORMANCE

- Telescopic jib
- Front oscillating axles to match the terrain irregularities granting optimal adherence to the ground
- 4 Wheels Steering
- Four-wheel drive
- Positive traction four wheel drive
- 360° rotation (continuous)
- Integral Integrated Special Drive Axle

## MOTORE

- Stage V engine (Stage IIIA available upon request)
- Auto Engine Fault Shutdown
- Anti-reverse Engine Device
- Anti-restart Engine Protection
- Hydraulic oil radiator

## BASKET

- Self levelling platform
- Rotating basket +/-90°
- Power to platform

## SAFETY

- Drive enable system
- Platform load sense system
- On-board diagnostics system
- Tilt indicator with alarm
- Crushing protection
- Emergency lowering system

## STANDARD EQUIPMENT



Construction



Large Events



Aircraft maintenance  
Ship repair



Plant Service



Oil & gas

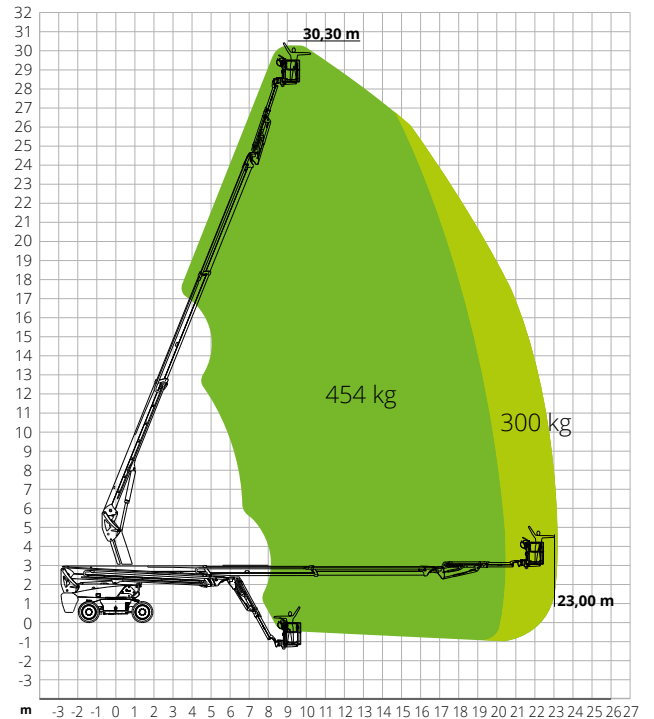


Restoration

## DTBJ30RT

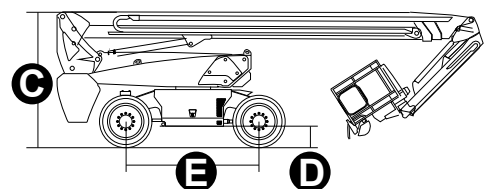
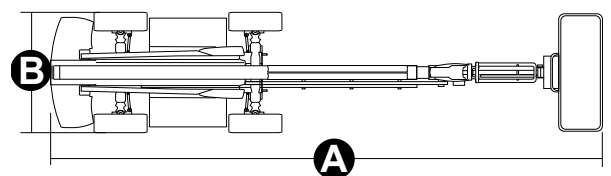
|                                |                      |
|--------------------------------|----------------------|
| Max. working height            | 30,30 m              |
| Max. basket height             | 28,30 m              |
| Max. reach                     | 23,00 m              |
| Max. platform load capacity    | 300/454 kg           |
| Max. Occupants                 | 3                    |
| Max. gradeability (stowed)     | 45%                  |
| Max. working slope             | X-5°/Y-5°            |
| Max. wind speed                | 12,5 m/s             |
| Turning radius (outside)       | 3,22 m               |
| Turning radius (inside)        | 1,87 m               |
| Turret rotation (continuous)   | 360°                 |
| Jib type                       | Telescopic           |
| Jib length                     | 3.98 m               |
| Jib movement                   | -                    |
| Jib vertical rotation          | 135°                 |
| Basket width                   | 0.91 m               |
| Basket length                  | 2.44 m               |
| Basket rotation                | 180°                 |
| Total weight                   | 18,900 kg            |
| Travel speed (closed config.)  | 6.0 km/h             |
| Travel speed (working config.) | 1.1 km/h             |
| Tyres                          | 385/45-28            |
| Engine                         | Deutz D2.9 L4/55.4kW |
| Diesel tank capacity           | 135 l                |
| Hydraulic tank capacity        | 165 l                |
| Electrical system              | -                    |
| Emergency power system         | 12V                  |
| Transmission                   | Hydrostatic          |

## LOAD CHART



## DIMENSIONS

|                                     |         |
|-------------------------------------|---------|
| <b>A</b> Platform length            | 12.25 m |
| Platform length (transport)         | 11.96 m |
| Platform width                      | 2.50 m  |
| <b>B</b> Platform width (transport) | 2.50 m  |
| <b>C</b> Platform height            | 2.87 m  |
| Platform height (transport)         | 2.89 m  |
| <b>E</b> Wheelbase                  | 2.80 m  |
| Tailswing                           | 1.61 m  |
| <b>D</b> Ground clearance           | 0.41 m  |



STANDARDS COMPLIANCE: EN 280, ANSI/SAIA A92.20

# #LIFTDIFFERENT

www.magnith.com



The data in this brochure are provided for the purposes of information and subject to change without notice.